

# NSC 32-400 COMPLETE SERIES



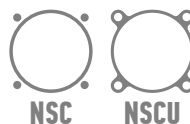
Robust tie rod design

Oil bearing is adopted so the piston rod do not need to be lubricated

Besides fixed buffer, the cylinder terminal has adjustable cushion screw so that the cylinder enters stably during commute direction

The cylinder piston is equipped with a permanent magnet that can trigger the magnetic switch of the cylinder to detect the moving position of cylinder

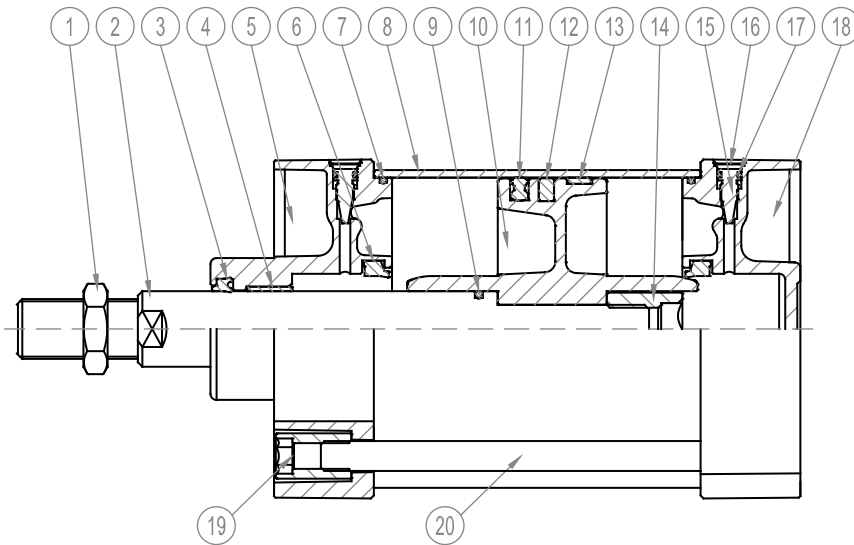
The seal material with high temperature resistance is adopted to guarantee the normal operation of cylinder at 150°C



## TECHNICAL DATA

BORE[Φ]	32	40	50	63	80	100	125	160	200	250	300	400
<b>Pneumatic connection</b>	G1/8"	G1/4"	G1/4"	G3/8"	G3/8"	G1/2"	G1/2"	G3/4"	G3/4"	G1"	G1"	G1"
<b>Piston rod thread</b>	M10×1.25	M12×1.25	M16×1.5	M16×1.5	M20×1.5	M20×1.5	M27×2	M36×2	M36×2	M42×2	M64×2	M60×2
<b>Cushioning</b>	Adjustable at both ends											
<b>Cushioning length[mm]</b>	18	18	18	18	24	24	24	24	28	32	38	50
<b>Operating temperature</b>	-20-80°C											
<b>Operating pressure</b>	10bar											
<b>Operating medium</b>	Filtered compressed air,with or without lubrication											
<b>Version</b>	Double acting											
<b>Type of mounting</b>	Via accessories											
<b>Mounting position</b>	Any											

1 bar=0.1MPa=14.5PSI



1	Nut, Piston rod	Carbon steel
2	Piston rod	C45 chrome-plated steel
3	Wiper seal	NBR
4	Oil bearing	Sintered steel
5	Front cover	Die cast aluminium
6	Cushioning seal	NBR
7	O-ring, Front cover	NBR
8	Tube	Anodized aluminium
9	O-ring, Piston rod	NBR
10	Piston	Die cast aluminium
11	Piston seal	NBR
12	Magnet	Ferrite
13	Wear Ring	POM
14	Piston rod lock nut	Carbon steel
15	Cushion adjustment screw	Brass
16	Snap ring, Cushion screw	Spring steel
17	O-ring, Cushion screw	NBR
18	End Cover	Die cast aluminium
19	Tie-rod nut	Nickel-plated steel
20	Tie rod	A3

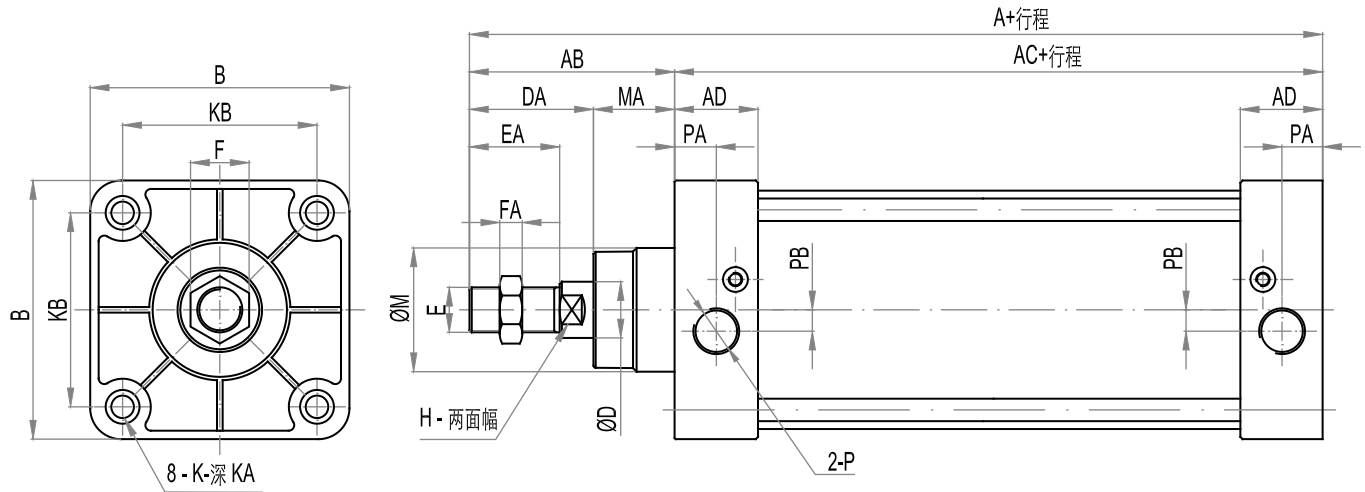
## KEY CODE

NSC D - 50 X 50 - 25 - S - SA - P - 2 4 - LB - I

NSC	D	50	50	25	S	SA	P
SERIES	TYPE	BORE	STROKE [mm]	ADJUSTABLE STROKE	MAGNETIC	VERSION	THREAD TYPE
NSC=With tie rod	Blank=Standard	32-40-50-	As request	As request	Blank=Without magnet	SA= Single acting	P=PT Thread
NSCU=Without tie rod	D=Double rod type	63-80-			S=With magnet	DA= Double acting	N=NPT Thread
	J=Double rod type with adjustable stroke	100-125-					G=G Thread
		160-200-					
		250-300-					
		400					

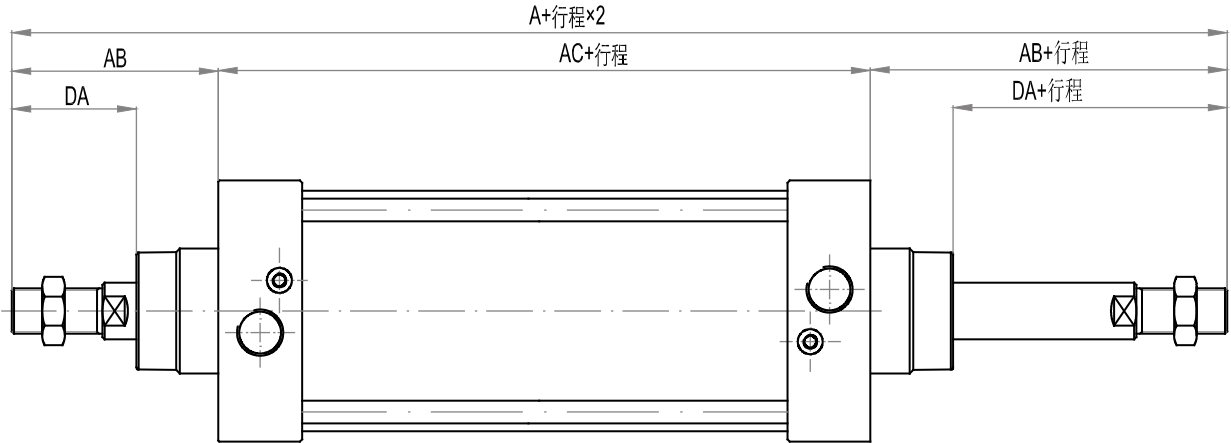
2	4	LB	I
PISTON ROD MATERIAL	TIE ROD MATERIAL	MOUNTING TYPE	CONNECTOR TYPE
Blank=Carbon steel	Blank=Carbon steel	Blank=Without accessory	Blank=Without accessory
2=316 Stainless steel	4=316 Stainless steel	LB=Angle bracket	I=I joint
		FA=Flange	Y=Y joint
		CA=Male clevis	U=Rod eye joint
		CB=Female clevis	F=Floating joint
		LNG=Square hinge	

PS: High temperature seals available upon request

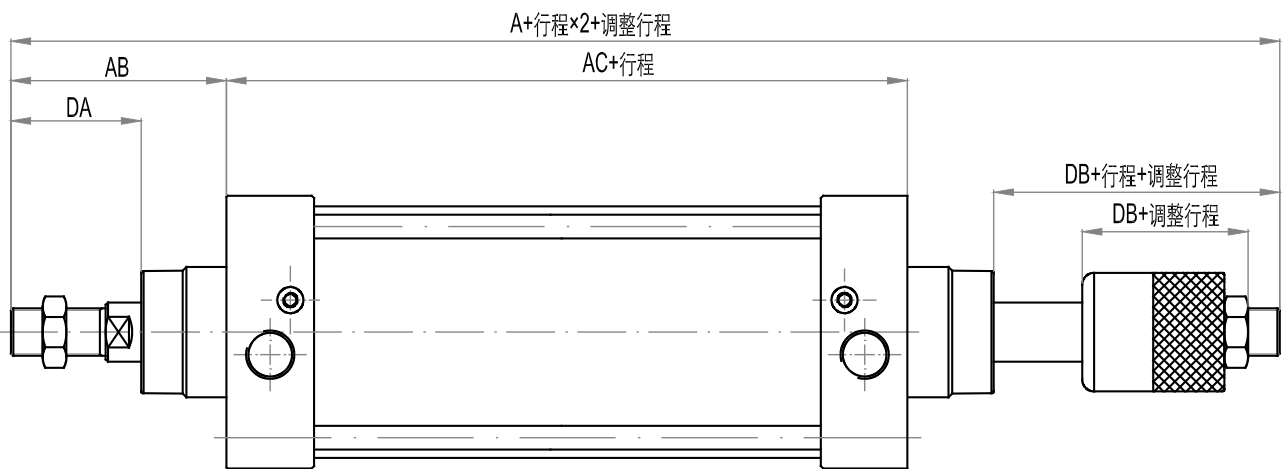
**NSC Standard Type**


Φ [MM]	32	40	50	63	80	100	125	160	200	250	300	400
<b>A</b>	140	142	150	153	183	189	203	239	244	294	339	485
<b>AB</b>	47	49	57	57	75	75	88	113	118	141	175	215
<b>AC</b>	93	93	93	96	108	114	115	126	126	153	164	270
<b>AD</b>	27.5	27.5	27.5	27.5	33	33	38	38	38	48	49	70
<b>B</b>	45	50	62	75	94	112	136	174	214	267	330	430
<b>D</b>	12	16	20	20	25	25	32	40	40	50	70	80
<b>DA</b>	32	34	42	42	54	54	68	88	88	106	115	125
<b>E</b>	M10×1.25	M12×1.25	M16×1.5	M16×1.5	M20×1.5	M20×1.5	M27×2	M36×2	M36×2	M42×2	M64×2	M60×2
<b>EA</b>	22	24	32	32	40	40	54	72	72	84	80	80
<b>F</b>	17	19	24	24	26	26	36	50	50	64	95	90
<b>FA</b>	6	7	8	8	8	8	9	13	13	21	38	30
<b>H</b>	10	14	17	17	22	22	27	36	36	46	64	76
<b>K</b>	M6×1	M6×1	M6×1	M8×1.25	M10×1.5	M10×1.5	M12×1.75	M16×2	M16×2	M20×2.5	M30×2.5	M30×3.5
<b>KA</b>	9.5	9.5	9.5	9.5	11.5	11.5	16	15	15	19.5	19.5	22
<b>KB</b>	33	37	47	56	70	84	104	134	163	202	270	350
<b>M</b>	28	32	38	38	47	47	52	62	62	86	96	128
<b>MA</b>	15	15	15	15	21	21	20	25	30	35	60	90
<b>P</b>	G1/8"	G1/4"	G1/4"	G3/8"	G3/8"	G1/2"	G1/2"	G3/4"	G3/4"	G1"	G1"	G1"
<b>PA</b>	14	14	14	14	16.5	16.5	20	20	20	25.5	24	35
<b>PB</b>	3.5	6	8.5	7	10	11	14	15	15	22	25	36

**NSCD Double rod type**



**NSCJ Double rod type with adjustable stroke**



Φ [MM]		32	40	50	63	80	100	125	160	200	250	300	400
<b>A</b>	NSCD	187	191	207	210	257	264	291	352	362	435	514	700
	NSCJ	182	185	196	199	243	249	265.5	332	342	409	490	665
<b>AB</b>		47	49	57	57	75	75	88	113	118	141	175	215
<b>AC</b>		93	93	93	96	108	114	115	126	126	153	164	270
<b>DA</b>		32	34	42	42	54	54	68	88	88	106	115	125
<b>DB</b>		21	21	23	23	29	29	42.5	68	68	80	90	90
<b>E</b>		M10×1.25	M12×1.25	M16×1.5	M16×1.5	M20×1.5	M20×1.5	M27×2	M36×2	M36×2	M42×2	M64×2	M60×2

**MOUNTING ATTACHMENTS AND ACCESSORIES**

Φ	LB	FA/FB	CA	CB	I	Y	U
<b>32</b>	●	●	●	●	●	●	●
<b>40</b>	●	●	●	●	●	●	●
<b>50</b>	●	●	●	●	●	●	●
<b>63</b>	●	●	●	●	●	●	●
<b>80</b>	●	●	●	●	●	●	●
<b>100</b>	●	●	●	●	●	●	●
<b>125</b>	●	●	●	●	●	●	●
<b>160</b>	●	●	●	●	●	●	●
<b>200</b>	●	●	●	●	●	●	●
<b>250</b>	●	●	●	●	●	●	●

More are available in accessories. Cover kits and service kits are available