

HVL HAND LEVER VALVE



Manual operation, smooth actuation, and exact and reliable orientation

Sliding column structure has good tightness and light weight and is easy to install and dismount

Internal hole adopts special processing technology which has little attrition friction, long service life

No need to add oil for lubrication

Panel-mounting makes it convenient to install and apply

TECHNICAL DATA

Model	HVL210-06	HVL210-08	HVL230-06	HVL230-08	HVL310-08	HVL310-10	HVL330-08	HVL330-10
Operating medium	Air filtered by 40um filter element							
Version	Manual control direct acting type							
Pneumatic connection	PT1/8"	PT1/4"	PT1/8"	PT1/4"	PT1/4"	PT3/8"	PT1/4"	PT3/8"
Orifice size	14mm ² (Cv=0.78)	16mm ² (Cv=0.89)	12mm ² (Cv=0.67)	12mm ² (Cv=0.67)	25mm ² (Cv=1.39)	30mm ² (Cv=1.67)	18mm ² (Cv=1.00)	18mm ² (Cv=1.00)
Valve type	5 port 2 position		5 port 3 position		5 port 2 position		5 port 3 position	
Lubrication	Not required. Once lubricated air is used, continue with same medium to optimise valve life span							
Operating pressure	0-0.8Mpa							
Proof pressure	1.5Mpa							
Operating temperature	-20-70°C							
Material body	Die casting aluminium							
Operating angle	±15°	±15°	±8.5°	±8.5°	±18°	±18°	±10°	±10°

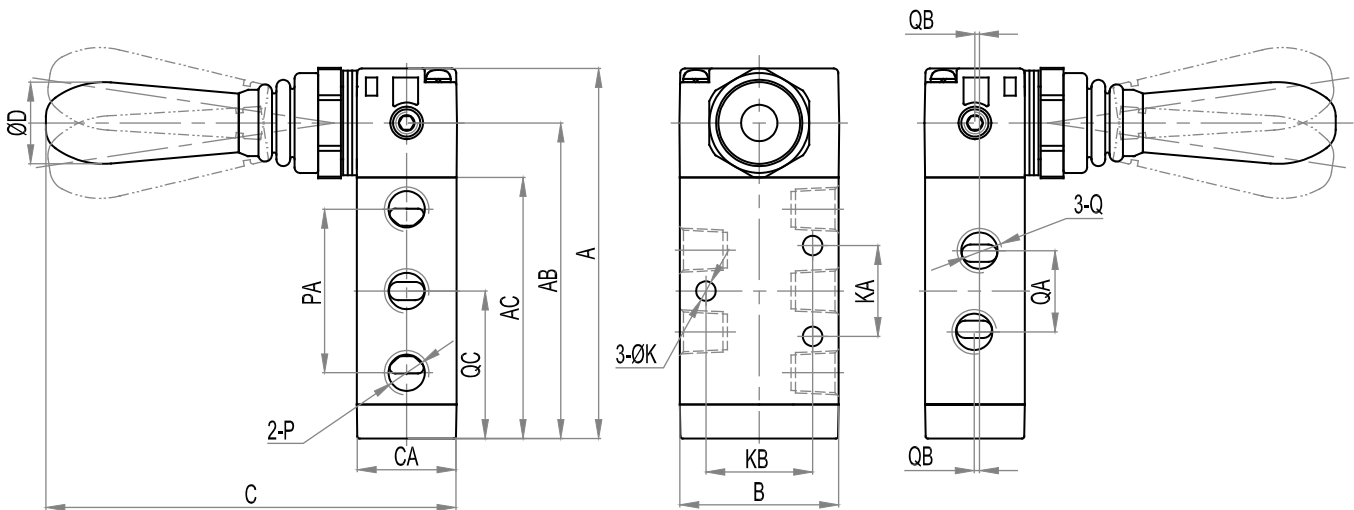
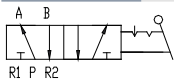


1 bar=0.1MPa=14.5PSI

KEY CODE
HVL200 - 10 - 06 - G

For further information, please consult with us.

HVL200	10	06	G
SERIES	TYPE	SERIES	PORT SIZE
HVL200	10:Single head double position	HVL200	06:1/8" 08:1/4"
HVL300	30:Single head three position	HVL300	08:1/4" 10:3/8"
			Thread Type
			Blank:PT Thread
			N:NPT Thread
			G:G Thread

DIMENSIONS


MODEL	HVL210-06(08)	HVL230-06(08)	HVL310-08(10)	HVL330-08(10)
A	84	84	99	99
AB	727	727	91.5	91.5
AC	635	635	78	78
B	35	35	40	40
C	95	95	100	100
CA	22	22	27	27
D	18	18	18	18
K	4.3	4.3	4.3	4.3
KA	20	20	24	24
P	G1/8"	G1/8"	G3/8"	G3/8"
PA	36	36	45	45
Q	PT1/4"/PT1/8"	PT1/4"/PT1/8"	PT3/8"/PT1/4"	PT3/8"/PT1/4"
QA	21	21	24	24
QB	1.5	1.5	2	2
QC	37.5	37.5	45.5	45.5