

CA2 40-100



Robust tie rod design

Oil bearing is adopted so the piston rod do not need to be lubricated

Besides fixed buffer, the cylinder terminal has adjustable cushion screw so that the cylinder enters stably during commute direction

The cylinder piston is equipped with a permanent magnet that can trigger the magnetic switch of the cylinder to detect the moving position of cylinder

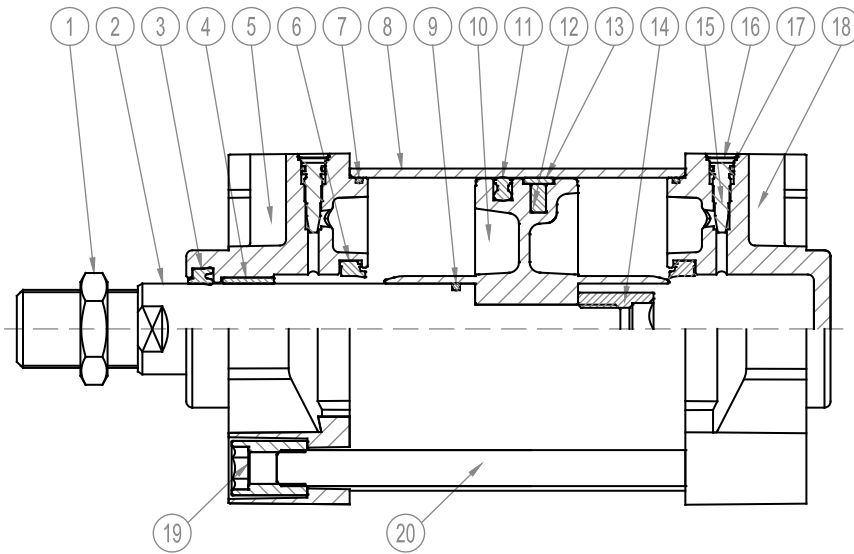
The seal material with high temperature resistance is adopted to guarantee the normal operation of cylinder at 150°C



TECHNICAL DATA

BORE[Φ]	40	50	63	80	100
Pneumatic connection	G1/4"	G3/8"	G3/8"	G1/2"	G1/2"
Piston rod thread	M14×1.5	M18×1.5	M18×1.5	M22×1.5	M26×1.5
Cushioning	Adjustable at both ends				
Cushioning length[mm]	24	24	24	24	24
Operating temperature	-5-70°C				
Operating pressure	10 bar				
Operating medium	Filtered compressed air,with or without lubrication				
Version	Double acting				
Type of mounting	Via accessories				
Mounting position	Any				

1 bar=0.1MPa=14.5PSI



1	Nut, Piston rod	Carbon steel
2	Piston rod	C45 chrome-plated steel
3	Wiper seal	NBR
4	Oil bearing	Steel
5	Front cover	Die cast aluminium
6	Cushioning seal	NBR
7	O-ring, Front cover	NBR
8	Tube	Anodized aluminium
9	O-ring, Piston rod	NBR
10	Piston	Die cast aluminium
11	Piston seal	NBR
12	Magnet	Ferrite
13	Wear Ring	POM
14	Piston rod lock nut	Carbon steel
15	Cushion adjustment screw	Brass
16	Snap ring, Cushion screw	Spring steel H59
17	O-ring, Cushion screw	NBR
18	End Cover	Die cast aluminium
19	Tie-rod nut	Nickel-plated steel
20	Tie rod	A3

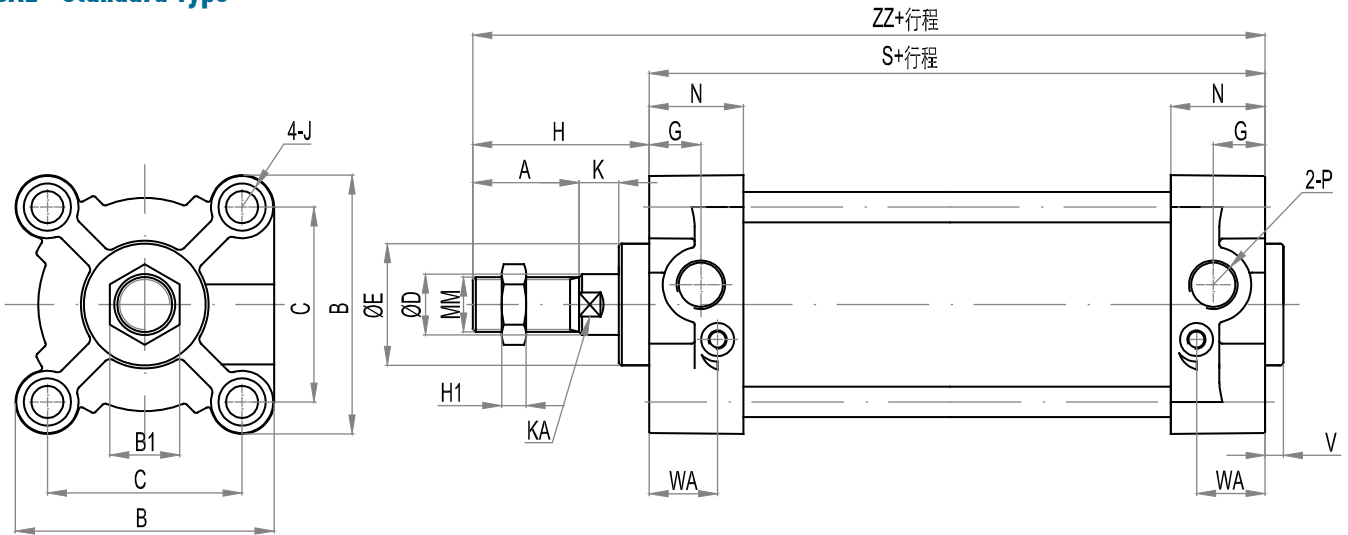
KEY CODE

CA2 J - 50 X 50 - 25 - S - SA - G - 2 4 - LB - I

CA2	J	50	50	25	S	SA	G
SERIES	TYPE	BORE	STROKE [mm]	ADJUSTABLE STROKE	MAGNETIC	VERSION	THREAD TYPE
CA2=With tie rod	Blank=Standard D=Double rod type J=Double rod type with adjustable stroke	40-50- 63-80- 100	As request	As request	Blank=Without magnet S=With magnet	SA= Single acting DA= Double acting	P=PT Thread N=NPT Thread G=G Thread

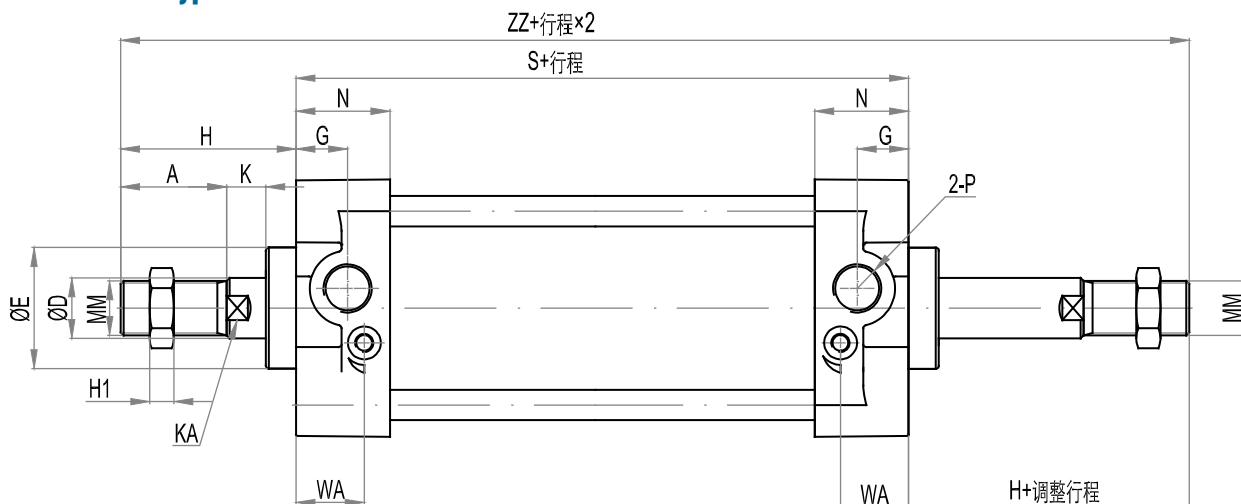
2	4	LB	I
PISTON ROD MATERIAL	TIE ROD MATERIAL	MOUNTING TYPE	CONNECTOR TYPE
Blank=Carbon steel 2=316 Stainless steel	Blank=Carbon steel 4=316 Stainless steel	Blank=Without accessory LB=Angle bracket FA=Flange CA=Male clevis CB=Female clevis LNG=Square hinge	Blank=Without accessory I=I joint Y=Y joint U=Rod eye joint F=Floating joint

PS: High temperature seals available upon request

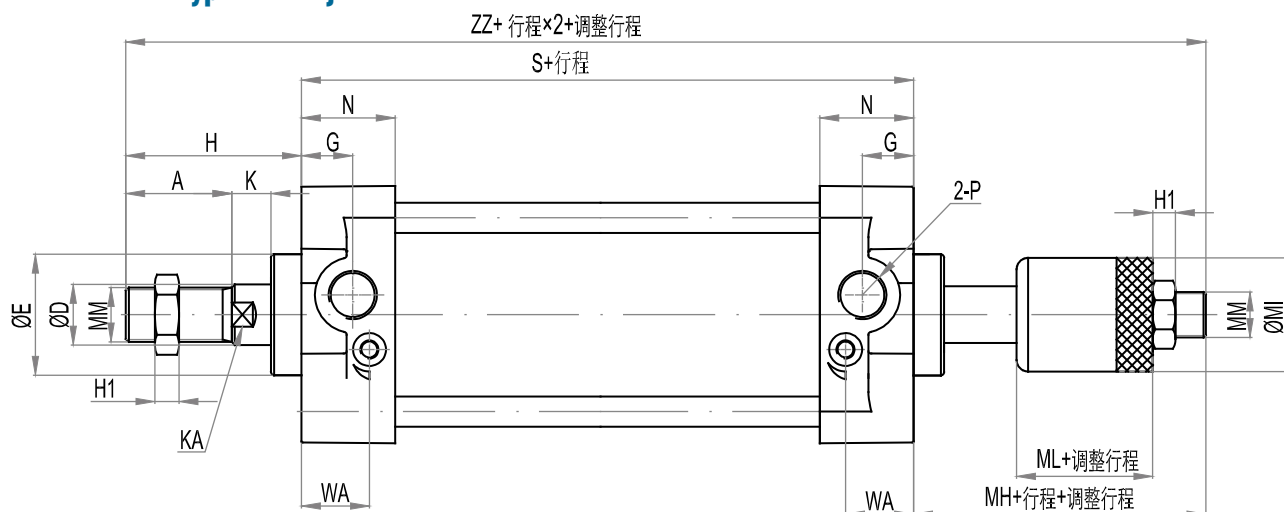
CA2 Standard Type


Φ [MM]	40	50	63	80	100
A	30	35	35	40	40
B	60	70	85	102	116
B1	22	27	27	32	41
C	44	52	64	78	92
D	16	20	20	25	30
E	32	40	40	52	52
G	15	17	17	21	21
H	51	58	58	71	72
H1	8	11	11	13	16
J	M8×1.25	M8×1.25	M10×1.25	M12×1.75	M12×1.75
K	6	7	7	10	10
KA	14	18	18	22	26
MM	M14×1.5	M18×1.5	M18×1.5	M22×1.5	M26×1.5
N	27	30	31	37	40
P	G1/4"	G3/8"	G3/8"	G1/2"	G1/2"
S	84	90	98	116	126
V	5	6	6	7	8
WA	18.5	18.5	23	28.5	28.5
ZZ	146	159	170	204	215

CA2D Double rod type



CA2J Double rod type with adjustable stroke



Ø [MM]	40	50	63	80	100	
MH	45	49	49	66	69	
MI	32	38	38	45	55	
ML	22	24	24	32	35	
ZZ	CA2D	186	206	214	258	270
	CA2J	180	197	205	253	267

MOUNTING ATTACHMENTS AND ACCESSORIES

Ø	LB	FA/FB	CA	CB	TC	I	Y	U	PIN
40									
50	•	•	•	•	•	•	•	•	•
63	•	•	•	•	•	•	•	•	•
80	•	•	•	•	•	•	•	•	•
100	•	•	•	•	•	•	•	•	•

More are available in accessories. Cover kits and service kits are available